

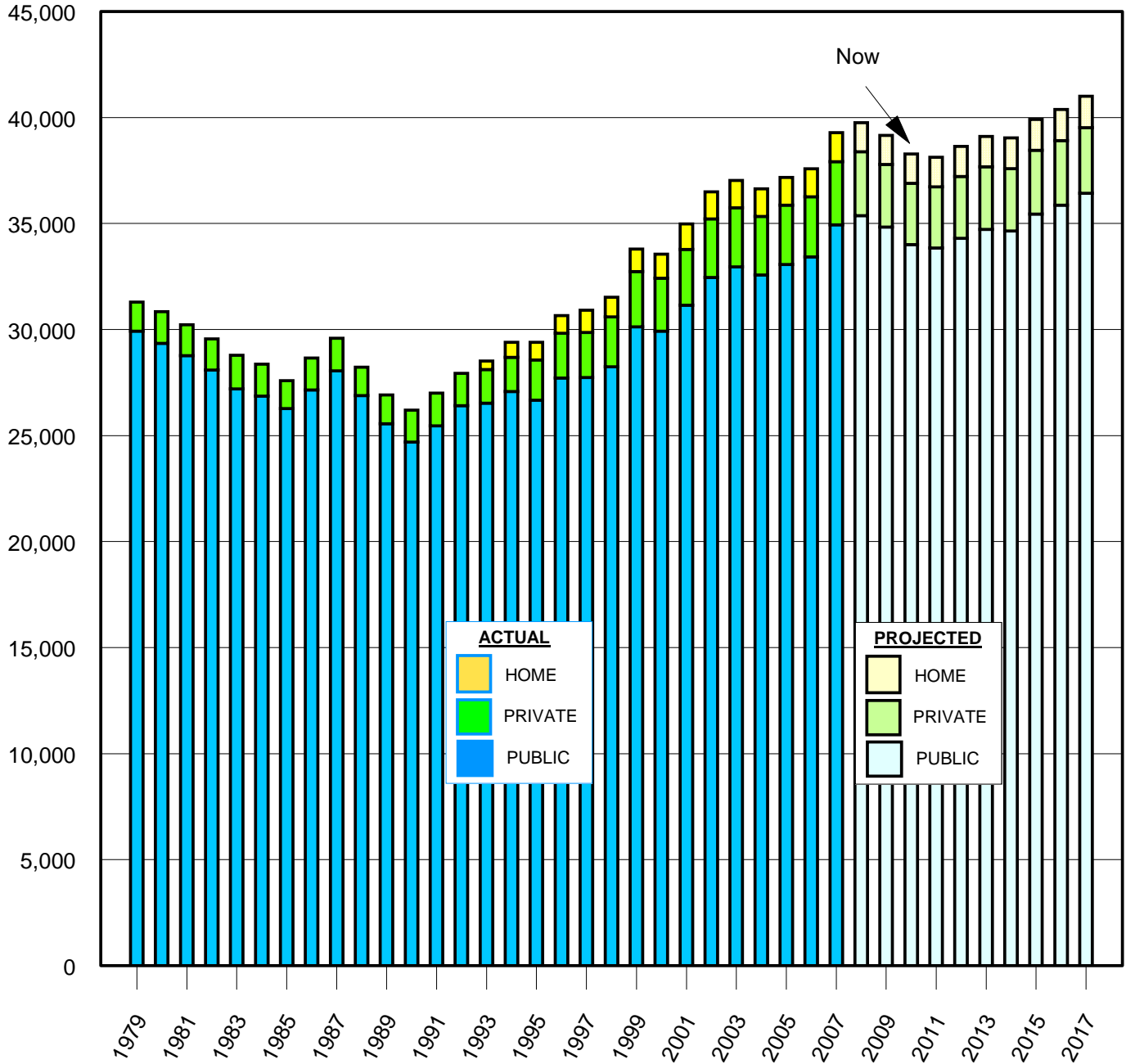
OREGON PUBLIC AND PRIVATE HIGH SCHOOL GRADUATES ACTUAL AND PROJECTED (1979 TO 2017)

YEAR	Public High School Graduates	Private High School Graduates	Home School Completers*	Total High School Graduates
1979	29,939	1,371		31,310
1980	29,354	1,499		30,853
1981	28,780	1,455		30,235
1982	28,099	1,466		29,565
1983	27,214	1,590		28,804
1984	26,870	1,503		28,373
1985	26,286	1,312		27,598
1986	27,165	1,501		28,666
1987	28,058	1,536		29,594
1988	26,903	1,339		28,242
1989	25,564	1,360		26,924
1990	24,702	1,500		26,202
1991	25,467	1,546		27,013
1992	26,422	1,525		27,947
1993	26,534	1,585	400	28,519
1994	27,093	1,614	715	29,422
1995	26,676	1,907	828	29,411
1996	27,720	2,118	833	30,671
1997	27,754	2,127	1,047	30,928
1998	28,255	2,361	932	31,548
1999	30,138	2,612	1,063	33,813
2000	29,939	2,506	1,130	33,575
2001	31,155	2,631	1,201	34,987
2002	32,466	2,763	1,277	36,506
2003	32,972	2,795	1,289	37,056
2004	32,588	2,760	1,302	36,650
2005	33,083	2,805	1,315	37,203
2006	33,438	2,835	1,329	37,602
2007	34,949	2,979	1,376	39,304
PROJECTED 2008	35,378	3,014	1,375	39,767
2009	34,840	2,963	1,379	39,182
2010	34,008	2,892	1,386	38,286
2011	33,855	2,881	1,401	38,137
2012	34,317	2,920	1,417	38,654
2013	34,731	2,955	1,432	39,118
2014	34,657	2,949	1,445	39,051
2015	35,449	3,016	1,460	39,925
2016	35,879	3,053	1,474	40,406
2017	36,439	3,100	1,487	41,026

* Data on home school enrollment by age has been collected since 1993-94.
Home school completers are assumed to be 85% of home schoolers aged 16 to 18.

Source: OUS 2009 Fact Book, page 29

OREGON HIGH SCHOOL GRADUATES PUBLIC AND PRIVATE (1979 TO 2017)



Source: OUS 2009 Fact Book, Pg. 29

fb/highsch/grad.pre 4

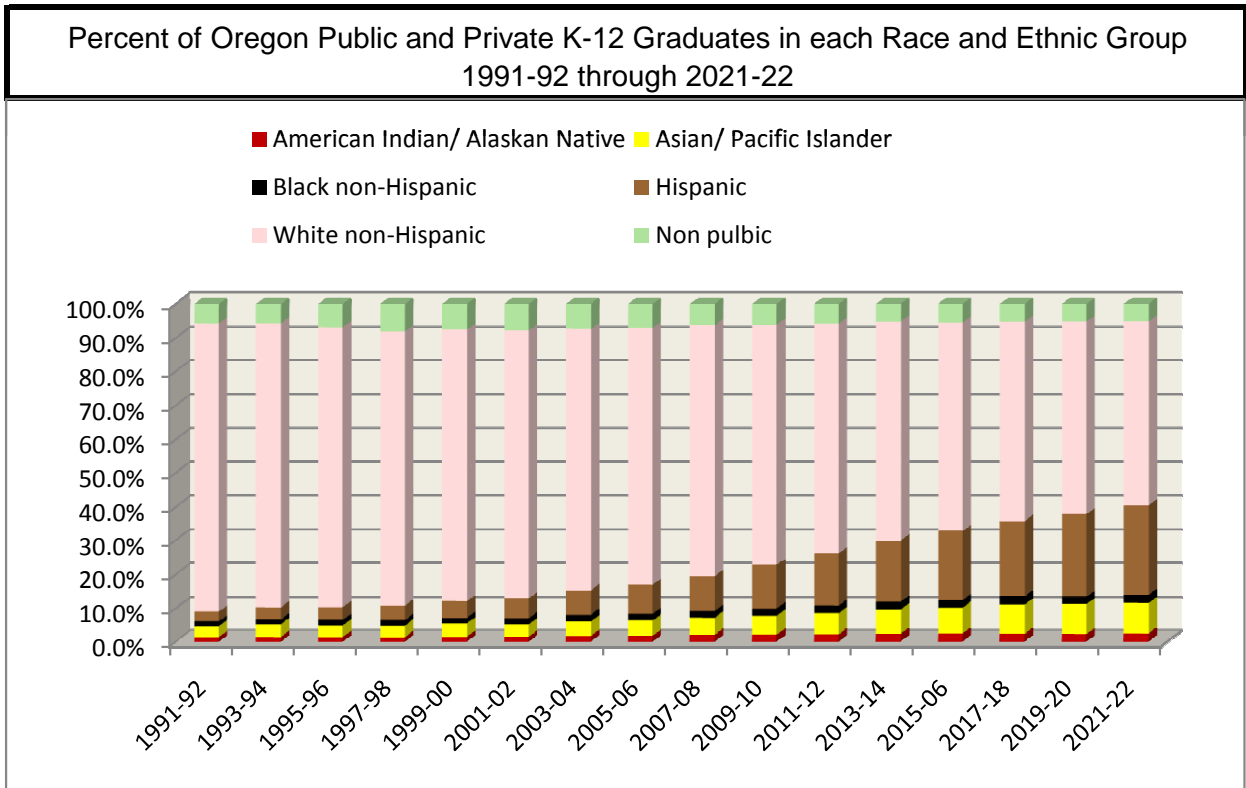
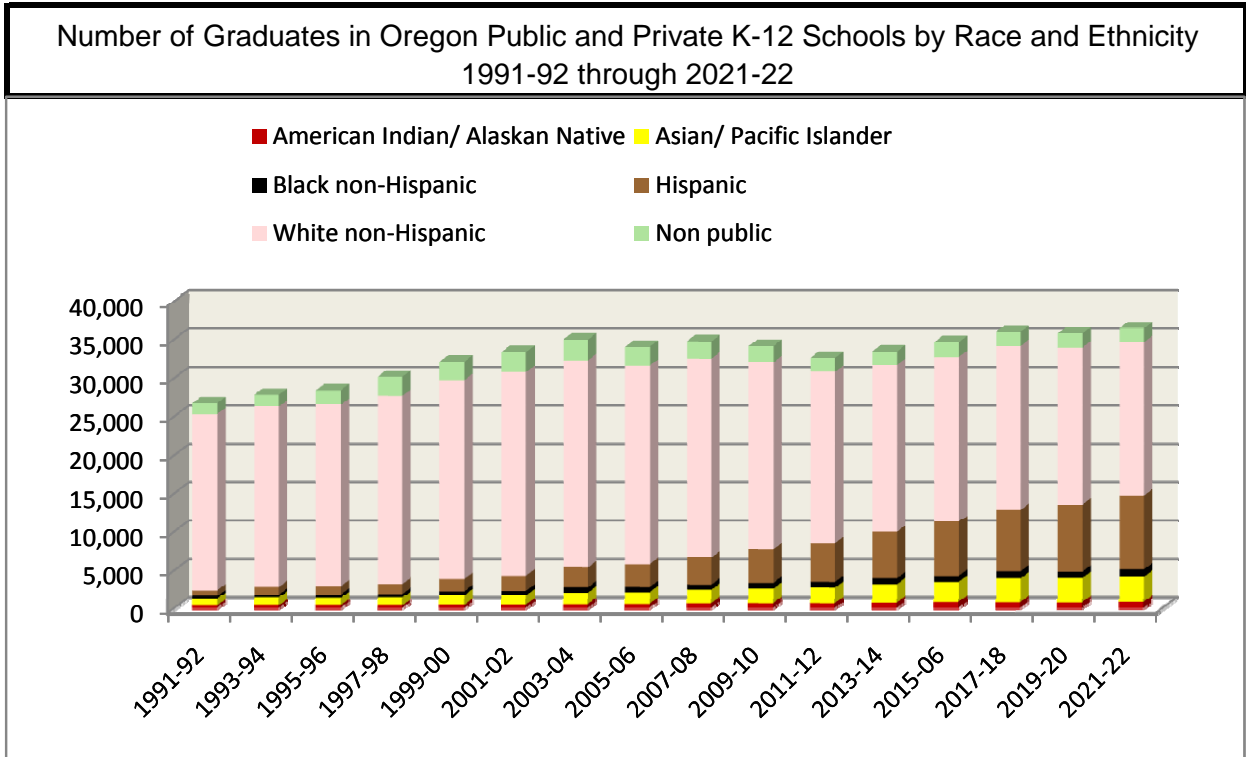
OREGON'S STUDENT PROFILE

Number of Graduates in Oregon Public and Private K-12 Schools by Race and Ethnicity 1991-92 through 2021-22								
Public							Nonpublic	Grand Total
School Year	American Indian/ Alaskan Native	Asian/ Pacific Islander	Black non-Hispanic	Hispanic	Total Minority	White non-Hispanic		
1991-92	366	914	374	767	2,421	22,884	1,500	26,805
1993-94	384	1,096	398	993	2,871	23,467	1,550	27,888
1995-96	389	1,028	458	1,069	2,944	23,626	1,907	28,477
1997-98	390	1,085	491	1,289	3,255	24,499	2,458	30,212
1999-00	448	1,340	519	1,595	3,902	25,880	2,447	32,229
2001-02	490	1,283	594	1,990	4,357	26,464	2,617	33,438
2003-04	574	1,565	692	2,583	5,414	26,981	2,592	34,987
2005-06	586	1,607	662	2,969	5,824	25,887	2,368	34,079
2007-08	688	1,836	670	3,589	6,783	25,832	2,160	34,775
2009-10	694	1,970	742	4,394	7,800	24,337	2,045	34,182
2011-12	694	2,105	739	5,036	8,574	22,286	1,848	32,708
2013-14	759	2,475	774	6,012	10,020	21,778	1,715	33,513
2015-06	845	2,689	796	7,083	11,413	21,393	1,854	34,660
2017-18	825	3,179	915	8,049	12,968	21,215	1,839	36,022
2019-20	793	3,249	811	8,754	13,607	20,387	1,801	35,795
2021-22	881	3,352	939	9,601	14,773	19,922	1,828	36,523

Percent of Oregon Public and Private K-12 Graduates in each Race and Ethnic Group 1991-92 through 2021-22								
Public							Nonpublic	Grand Total
School Year	American Indian/ Alaskan	Asian/ Pacific Islander	Black non-Hispanic	Hispanic	Total Minority	White non-Hispanic		
1991-92	1.4%	3.4%	1.4%	2.9%	9.0%	85.4%	5.6%	100.0%
1993-94	1.4%	3.9%	1.4%	3.6%	10.3%	84.1%	5.6%	100.0%
1995-96	1.4%	3.6%	1.6%	3.8%	10.3%	83.0%	6.7%	100.0%
1997-98	1.3%	3.6%	1.6%	4.3%	10.8%	81.1%	8.1%	100.0%
1999-00	1.4%	4.2%	1.6%	4.9%	12.1%	80.3%	7.6%	100.0%
2001-02	1.5%	3.8%	1.8%	6.0%	13.0%	79.1%	7.8%	100.0%
2003-04	1.6%	4.5%	2.0%	7.4%	15.5%	77.1%	7.4%	100.0%
2005-06	1.7%	4.7%	1.9%	8.7%	17.1%	76.0%	6.9%	100.0%
2007-08	2.0%	5.3%	1.9%	10.3%	19.5%	74.3%	6.2%	100.0%
2009-10	2.0%	5.8%	2.2%	12.9%	22.8%	71.2%	6.0%	100.0%
2011-12	2.1%	6.4%	2.3%	15.4%	26.2%	68.1%	5.6%	100.0%
2013-14	2.3%	7.4%	2.3%	17.9%	29.9%	65.0%	5.1%	100.0%
2015-06	2.4%	7.8%	2.3%	20.4%	32.9%	61.7%	5.3%	100.0%
2017-18	2.3%	8.8%	2.5%	22.3%	36.0%	58.9%	5.1%	100.0%
2019-20	2.2%	9.1%	2.3%	24.5%	38.0%	57.0%	5.0%	100.0%
2021-22	2.4%	9.2%	2.6%	26.3%	40.4%	54.5%	5.0%	100.0%

Actual Projected

OREGON'S STUDENT PROFILE



Source: OICA Fact Book page 1- 1 - 5

fb/highsch/race.2

CHANCE FOR COLLEGE BY AGE 19 -- 2006

High School Grad. Rates*			Coll. Continuation Rates*			Chance For College*		Change in %
State	2006		State	2006	State	2006	'92 to '06	
1 Minnesota	85.1%		1 Mississippi	76.1%	1 South Dakota	58.9%	15.1%	
2 Iowa	83.2%		2 New York	74.4%	2 Minnesota	58.2%	10.4%	
3 Nebraska	82.2%		3 North Dakota	72.3%	3 North Dakota	57.2%	-0.3%	
4 New Jersey	82.2%		4 South Dakota	71.9%	4 New Jersey	57.2%	6.0%	
5 South Dakota	82.0%		5 Massachusetts	71.7%	5 Connecticut	54.4%	8.5%	
6 Wisconsin	81.3%		6 New Mexico	70.5%	6 Massachusetts	53.6%	6.9%	
7 Vermont	79.5%		7 Connecticut	70.4%	7 Nebraska	53.1%	-2.1%	
8 North Dakota	79.1%		8 New Jersey	69.6%	8 New Hampshire	51.0%	7.1%	
9 Montana	79.1%		9 Minnesota	68.4%	9 Iowa	50.6%	-3.5%	
10 Arkansas	78.8%		10 Georgia	68.2%	10 Wisconsin	49.8%	0.1%	
11 Idaho	78.7%		11 Virginia	67.2%	11 Kansas	48.9%	2.7%	
12 New Hampshire	78.6%		12 Kansas	65.8%	12 Pennsylvania	48.7%	4.9%	
13 Pennsylvania	78.5%		13 North Carolina	65.6%	13 Maine	48.6%	9.2%	
14 Connecticut	77.3%		14 Maryland	65.6%	14 Maryland	48.2%	5.6%	
15 Missouri	77.0%		15 Louisiana	65.5%	15 Montana	46.0%	2.6%	
16 Utah	76.5%		16 Michigan	65.2%	16 Virginia	45.9%	7.6%	
17 Maine	75.2%		17 New Hampshire	64.9%	17 Illinois	45.4%	-3.4%	
18 Illinois	74.8%		18 Maine	64.6%	18 Delaware	44.8%	4.7%	
19 Massachusetts	74.7%		19 Nebraska	64.5%	19 Arkansas	44.6%	8.9%	
20 Wyoming	74.6%		20 Delaware	64.1%	20 Ohio	44.6%	8.2%	
21 Kansas	74.3%		21 South Carolina	63.9%	21 Mississippi	44.5%	6.1%	
22 Ohio	74.3%		22 Tennessee	63.5%	22 New York	44.4%	-0.1%	
23 Oklahoma	74.2%		23 Indiana	63.4%	23 Indiana	44.3%	5.9%	
24 Maryland	73.5%		24 Colorado	62.9%	24 Colorado	44.3%	5.8%	
25 Rhode Island	72.9%		25 Alabama	62.7%	25 Missouri	44.0%	8.3%	
26 West Virginia	72.6%		26 Pennsylvania	62.1%	26 Oklahoma	43.9%	5.3%	
27 Kentucky	71.2%		Total	61.6%	27 Vermont	43.9%	-2.0%	
28 Oregon	70.9%		27 Kentucky	61.4%	28 Kentucky	43.7%	9.5%	
29 Colorado	70.4%		28 Wisconsin	61.2%	29 New Mexico	43.5%	9.5%	
30 Delaware	69.9%		29 Iowa	60.8%	30 Wyoming	43.2%	4.5%	
31 Indiana	69.8%		30 Illinois	60.7%	31 North Carolina	42.7%	8.4%	
32 Washington	68.6%		31 Florida	60.2%	32 Michigan	42.5%	1.7%	
33 Virginia	68.3%		32 Ohio	60.0%	33 Tennessee	42.5%	10.4%	
Total	67.9%		33 Hawaii	59.8%	34 West Virginia	41.9%	4.0%	
34 Arizona	67.7%		34 Oklahoma	59.2%	Total	41.8%	3.1%	
35 Hawaii	67.6%		35 Montana	58.2%	35 Hawaii	40.4%	-3.4%	
36 Tennessee	66.9%		36 Wyoming	58.0%	36 Rhode Island	39.9%	-7.6%	
37 North Carolina	65.2%		37 West Virginia	57.8%	37 Alabama	38.6%	1.3%	
38 Michigan	65.1%		38 Missouri	57.1%	38 Georgia	38.1%	3.0%	
39 California	65.1%		39 Arkansas	56.6%	39 Louisiana	37.6%	8.9%	
40 Texas	64.1%		40 California	55.8%	40 California	36.3%	1.1%	
41 Alaska	62.0%		41 Vermont	55.2%	41 South Carolina	36.1%	10.9%	
42 New Mexico	61.8%		42 Texas	55.2%	42 Utah	36.0%	-5.9%	
43 Alabama	61.5%		43 Rhode Island	54.7%	43 Idaho	36.0%	-3.7%	
44 New York	59.7%		44 Nevada	52.2%	44 Texas	35.4%	6.0%	
45 Mississippi	58.5%		45 Washington	48.0%	45 Oregon	33.6%	-6.3%	
46 Louisiana	57.3%		46 Oregon	47.3%	46 Washington	33.0%	-11.5%	
47 South Carolina	56.5%		47 Utah	47.1%	47 Florida	32.4%	2.9%	
48 Georgia	55.9%		48 Alaska	45.8%	48 Arizona	30.3%	-3.0%	
49 Florida	53.9%		49 Idaho	45.7%	49 Alaska	28.4%	-0.9%	
50 Nevada	50.5%		50 Arizona	44.8%	50 Nevada	26.3%	3.1%	

*Grad. as % of 9th Grade enroll. four years prior

H. S. grad. enrolled anywhere in the U.S. that fall*

H. S. Graduate Rate x College Continuation Rate*

OREGON HIGH SCHOOL GRADUATES PURSUING COLLEGE PROGRAMS IN OREGON THE FOLLOWING FALL

COUNTY	Total H. S. Grads in Spring of:				Total Enrolled in Oreg. H. Ed. in Fall of:				Percentage Enrolled in Oregon				By Sector								Prct. 4-yr. at Indep.							
	'89	'98	'00	'02	'89	'98	'00	'02	'89	'98	'00	'02	Comm. Coll's.		State System		Indep. Insti's.				'89	'98	'00	'02				
													'89	'98	'89	'98	'89	'98	'00	'02	'89	'98	'00	'02				
WESTERN OREGON																												
Benton	561	740	779	748	310	373	405	459	55%	50%	52%	61%	130	149	161	172	159	202	201	253	21	22	43	34	12%	10%	18%	12%
Clackamas	3,003	3,188	3,566	3,417	1,529	1,494	1,722	1,839	51%	47%	48%	54%	805	814	829	782	555	503	676	865	169	177	217	192	23%	26%	24%	18%
Clatsop	274	279	319	343	124	98	159	161	45%	35%	50%	47%	63	33	90	74	51	41	51	65	10	24	18	22	16%	37%	26%	25%
Columbia	476	549	492	543	180	133	152	196	38%	24%	31%	36%	78	54	70	89	74	50	56	82	28	29	26	25	27%	37%	32%	23%
Coos	656	674	801	602	267	321	412	304	41%	48%	51%	50%	149	233	266	189	99	68	110	92	19	20	36	23	16%	23%	25%	20%
Curry	191	198	199	203	64	88	78	72	34%	44%	39%	35%	23	38	32	26	36	39	31	41	5	11	15	5	12%	22%	33%	11%
Douglas	1,153	1,175	1,066	1,147	408	468	432	529	35%	40%	41%	46%	248	341	270	323	112	88	136	165	48	39	26	41	30%	31%	16%	20%
Jackson	1,612	1,557	1,668	1,781	465	625	723	712	29%	40%	43%	40%	72	226	270	254	344	346	374	390	49	53	79	68	12%	13%	17%	15%
Josephine	555	600	651	670	237	296	317	307	43%	49%	49%	46%	135	155	164	172	72	99	121	114	30	42	32	21	29%	30%	21%	16%
Lane	2,645	2,913	2,884	3,238	1,105	1,226	1,311	1,402	42%	42%	45%	43%	530	603	541	570	481	524	660	734	94	99	110	98	16%	16%	14%	12%
Lincoln	358	443	513	439	153	175	183	161	43%	40%	36%	37%	83	67	68	71	51	89	92	77	19	19	23	13	27%	18%	20%	14%
Linn	1,012	1,000	1,057	1,027	476	469	535	528	47%	47%	51%	51%	309	315	338	341	127	116	157	150	40	38	40	37	24%	25%	20%	20%
Marion	2,338	2,728	2,902	3,042	1,075	1,256	1,394	1,244	46%	46%	48%	41%	546	741	802	537	396	367	415	547	133	148	177	160	25%	29%	30%	23%
Multnomah	5,065	4,634	5,261	5,289	2,296	2,045	2,340	2,404	45%	44%	44%	45%	1,196	1,036	1,139	1,001	866	736	938	1,141	234	273	263	262	21%	27%	22%	19%
Polk	403	408	402	383	161	197	197	146	40%	48%	49%	38%	54	88	89	51	86	85	88	71	21	24	20	24	20%	22%	19%	25%
Tillamook	199	251	265	264	76	80	92	90	38%	32%	35%	34%	36	33	44	36	33	35	39	43	7	12	9	11	18%	26%	19%	20%
Washington	3,125	3,801	4,235	4,686	1,541	1,464	1,915	2,342	49%	39%	45%	50%	605	488	649	784	761	755	1,034	1,296	175	221	232	262	19%	23%	18%	17%
Yamhill	668	898	941	959	223	374	354	395	33%	42%	38%	41%	92	177	135	140	93	128	155	190	38	69	64	65	29%	35%	29%	25%
Totals	24,294	26,036	28,001	28,781	10,690	11,182	12,721	13,291	44%	43%	45%	46%	5,154	5,591	5,957	5,612	4,396	4,271	5,334	6,316	1,140	1,320	1,430	1,363	21%	24%	21%	18%
EASTERN OREGON																												
Baker	174	183	173	192	62	42	52	67	36%	23%	30%	35%	12	9	11	15	42	29	30	42	8	4	11	10	16%	12%	27%	19%
Crook	150	148	199	222	63	66	64	71	42%	45%	32%	32%	36	48	48	39	22	16	14	27	5	2	2	5	19%	11%	13%	16%
Deschutes	826	988	1,286	1,207	343	491	519	527	42%	50%	40%	44%	209	334	311	289	114	109	169	195	20	48	39	43	15%	31%	19%	18%
Gilliam	18	28	33	31	10	13	14	11	56%	46%	42%	35%	6	4	5	4	1	6	4	5	3	3	5	2	75%	33%	56%	29%
Grant	119	98	96	104	31	20	38	50	26%	20%	40%	48%	12	6	7	22	15	10	25	23	4	4	6	5	21%	29%	19%	18%
Harney	96	69	108	64	31	19	23	25	32%	28%	21%	39%	15	4	7	9	13	12	10	15	3	3	6	1	19%	20%	38%	6%
Hood River	168	238	260	235	45	103	97	99	27%	43%	37%	42%	11	41	48	44	27	51	37	48	7	11	12	7	21%	18%	24%	13%
Jefferson	128	139	156	152	64	61	46	56	50%	44%	29%	37%	30	30	24	28	21	27	14	21	13	4	8	7	38%	13%	36%	25%
Klamath	642	583	597	567	213	172	186	167	33%	30%	31%	29%	29	36	27	20	166	106	136	124	18	30	23	23	10%	22%	14%	16%
Lake	86	108	100	108	41	51	36	39	48%	47%	36%	36%	17	12	12	13	23	35	24	24	1	4	0	2	4%	10%	0%	8%
Malheur	325	289	281	304	137	55	126	409	42%	19%	45%	135%	90	30	92	380	42	16	32	26	5	9	2	3	11%	36%	6%	10%
Morrow	107	118	158	119	47	33	28	31	44%	28%	18%	26%	22	17	11	11	22	13	13	16	3	3	4	4	12%	19%	24%	20%
Sherman	19	28	35	30	12	15	12	16	63%	54%	34%	53%	4	11	5	6	6	4	6	8	2	0	1	2	25%	0%	14%	20%
Umatilla	594	616	658	645	218	171	124	200	37%	28%	19%	31%	138	87	33	98	60	64	73	79	20	20	18	23	25%	24%	20%	23%
Union	293	331	318	283	92	108	105	110	31%	33%	33%	39%	18	17	9	14	67	86	86	84	7	5	10	12	9%	5%	10%	13%
Wallowa	74	98	89	83	34	30	31	36	46%	31%	35%	43%	14	7	13	6	16	21	14	25	4	2	4	5	20%	9%	22%	17%
Wasco	246	236	231	243	128	102	84	107	52%	43%	36%	44%	52	67	23	51	67	30	47	52	9	5	14	4	12%	14%	23%	7%
Wheeler	22	33	21	27	7	15	9	15	32%	45%	43%	56%	1	8	0	9	4	4	8	5	2	3	1	1	33%	43%	11%	17%
Totals	4,087	4,331	4,799	4,616	1,578	1,567	1,594	2,036	39%	36%	33%	44%	716	768	686	1,058	728	639	742	819	134	160	166	159	16%	20%	18%	16%
Unknown	0	266	0	0	60	491	433	199					41	466	365	165	19	11	25	17	0	14	43	17				
Statewide	28,381	30,633	32,800	33,397	12,328	13,240	14,748	15,526	43%	43%	45%	46%	5,911	6,825	7,008	6,835	5,143	4,921	6,101	7,152	1,274	1,494	1,639	1,539	20%	23%	23%	21%

Percent of H.S. Grads in Or. C's the following Fall: 43% 43% 45% 46%

Comm. C's.	48%	52%
State System	42%	37%
Ind. Insti's.	10%	11%
% 4-yr. at Indep. Insti's.	20%	23%

Fall Migration of Recent High School Graduates To and From Oregon

	2000							2004							2008																			
	In-Migration From:				Out-Migration To:			Net To Ore.	In-Migration From:				Out-Migration To:			Net To Ore.	In-Migration From:				Out-Migration To:			Net To Ore.										
	Attending, In Oregon:				Attending, Out of St.:				Attending, In Oregon:				Attending, Out of St.:				Attending, In Oregon:				Attending, Out of St.:													
	Tot. In	Public		Private		Tot. Out	Public		Private	Tot. In	Public		Private		Tot. Out	Public		Private	Tot. In	Public		Private		Tot. Out	Public		Private							
	4-Yr.	2-Yr.	4-Yr.	2-Yr.		4-Yr.	2-Yr.	4-Yr.	2-Yr.		4-Yr.	2-Yr.	4-Yr.	2-Yr.		4-Yr.	2-Yr.	4-Yr.	2-Yr.		4-Yr.	2-Yr.	4-Yr.	2-Yr.										
Alabama	3	0	1	2	0	7	5	0	2	0	(4)	5	1	0	4	0	11	5	0	4	2	(6)	Alabama	11	2	1	8	0	7	6	0	1	0	4
Alaska	221	116	31	74	0	14	11	0	3	0	207	154	100	16	37	1	18	12	0	6	0	136	Alaska	173	109	8	56	0	8	8	0	0	0	165
Arizona	57	16	1	40	0	184	150	5	22	7	(127)	61	16	2	42	1	161	125	12	5	19	(100)	Arizona	101	46	0	55	0	200	129	31	33	7	(99)
Arkansas	5	2	1	2	0	7	2	1	4	0	(2)	4	1	1	2	0	14	2	0	12	0	(10)	Arkansas	4	2	1	1	0	7	3	0	4	0	(3)
California	812	386	19	407	0	856	162	0	670	24	(44)	1,014	595	22	383	14	581	122	3	437	19	433	California	1,843	1,246	37	556	4	797	178	0	583	36	1,046
Colorado	117	57	1	59	0	154	112	1	41	0	(37)	159	69	3	85	2	155	95	2	58	0	4	Colorado	218	124	1	92	1	133	81	1	50	1	85
Connec.	12	4	0	8	0	28	0	0	28	0	(16)	9	2	0	7	0	31	4	0	27	0	(22)	Connec.	20	4	1	15	0	20	3	0	17	0	0
Delaware	1	0	0	1	0	3	3	0	0	0	(2)	0	0	0	0	0	1	1	0	0	0	(1)	Delaware	3	1	0	2	0	2	1	0	1	0	1
Dist.of Col.	5	2	0	3	0	22	0	0	22	0	(17)	3	0	0	2	1	50	0	0	50	0	(47)	Dist.of Col.	8	1	0	7	0	43	0	0	43	0	(35)
Florida	7	0	3	4	0	48	3	3	35	7	(41)	10	7	0	3	0	33	3	2	28	0	(23)	Florida	27	10	0	17	0	33	4	3	26	0	(6)
Georgia	7	4	0	3	0	22	8	2	12	0	(15)	6	1	0	5	0	21	5	1	15	0	(15)	Georgia	21	12	1	8	0	31	8	1	22	0	(10)
Hawaii	332	187	2	143	0	43	29	0	14	0	289	255	124	1	130	0	63	31	7	25	0	192	Hawaii	449	261	3	185	0	45	20	0	25	0	404
Idaho	265	71	92	102	0	210	107	20	29	54	55	329	94	156	78	1	317	156	10	148	3	12	Idaho	605	105	400	88	12	376	197	11	167	1	229
Illinois	58	29	0	29	0	71	6	0	65	0	(13)	59	30	0	29	0	58	7	0	51	0	1	Illinois	79	44	1	34	0	96	5	1	90	0	(17)
Indiana	13	6	1	6	0	32	4	0	28	0	(19)	7	2	0	5	0	45	10	0	35	0	(38)	Indiana	11	4	0	7	0	46	16	0	30	0	(35)
Iowa	14	5	1	8	0	35	9	1	25	0	(21)	15	4	0	11	0	33	5	0	28	0	(18)	Iowa	13	6	1	6	0	25	3	0	22	0	(12)
Kansas	8	1	0	7	0	25	4	2	13	6	(17)	11	2	0	9	0	18	8	4	4	2	(7)	Kansas	13	8	0	5	0	17	4	4	8	1	(4)
Kentucky	2	1	0	1	0	3	0	0	3	0	(1)	0	0	0	0	0	8	3	0	5	0	(8)	Kentucky	0	0	0	0	0	5	4	0	1	0	(5)
Louisiana	6	2	1	3	0	29	1	0	28	0	(23)	5	2	0	2	1	29	11	1	17	0	(24)	Louisiana	9	3	1	5	0	17	4	1	12	0	(8)
Maine	16	3	0	13	0	19	2	0	17	0	(3)	10	1	0	9	0	6	1	0	5	0	(4)	Maine	13	6	0	7	0	19	0	0	19	0	(6)
Maryland	13	5	0	8	0	21	10	0	11	0	(8)	28	14	0	13	1	13	7	0	6	0	15	Maryland	16	8	0	8	0	35	15	0	20	0	(19)
Mass.	28	6	0	22	0	110	2	0	108	0	(82)	34	11	0	23	0	90	2	0	88	0	(56)	Mass.	47	10	0	37	0	132	4	0	128	0	(85)
Michigan	15	4	0	11	0	8	0	0	8	0	7	14	7	0	6	1	22	8	1	13	0	(8)	Michigan	23	15	1	7	0	28	12	0	16	0	(5)
Minnesota	46	9	1	36	0	49	4	1	44	0	(3)	44	12	0	31	1	73	9	2	62	0	(29)	Minnesota	79	27	2	50	0	44	4	0	40	0	35
Mississippi	0	0	0	0	0	2	1	0	1	0	(2)	2	1	0	1	0	3	2	0	1	0	(1)	Mississippi	1	1	0	0	0	1	0	0	1	0	0
Missouri	14	5	0	9	0	33	2	0	26	5	(19)	17	6	0	7	4	30	5	1	20	4	(13)	Missouri	20	9	1	10	0	31	7	0	17	7	(11)
Montana	120	39	14	67	0	83	58	0	25	0	37	116	39	10	62	5	119	86	5	28	0	(3)	Montana	92	29	6	53	4	137	101	6	30	0	(45)
Nebraska	9	5	0	4	0	11	2	1	8	0	(2)	6	3	0	1	2	8	2	0	6	0	(2)	Nebraska	10	5	0	4	1	19	4	0	15	0	(9)
Nevada	86	54	8	24	0	49	46	2	1	0	(37)	83	49	9	24	1	37	34	1	2	0	46	Nevada	121	67	6	47	1	35	30	2	1	2	86
New Hamp.	11	0	0	11	0	13	2	0	11	0	(2)	10	3	0	7	0	7	2	0	5	0	3	New Hamp.	9	6	0	3	0	16	0	0	16	0	(7)
New Jer.	14	4	0	10	0	12	0	0	12	0	2	8	3	0	5	0	11	3	0	8	0	(3)	New Jer.	21	9	0	12	0	13	3	0	10	0	8
New Mex.	29	9	0	20	0	28	14	4	10	0	1	37	18	1	17	1	12	4	5	3	0	25	New Mex.	56	26	0	30	0	18	8	2	8	0	38
New York	31	6	0	25	0	155	28	0	127	0	(124)	23	6	0	17	0	116	6	1	109	0	(93)	New York	48	14	0	34	0	182	22	0	159	1	(134)
Nor. Car.	13	7	0	6	0	29	6	2	21	0	(16)	2	1	0	1	0	36	4	1	31	0	(34)	Nor. Car.	8	3	0	5	0	27	3	2	22	0	(19)
Nor. Dak.	5	2	1	2	0	14	6	0	8	0	(9)	5	2	1	2	0	15	10	0	5	0	(10)	Nor. Dak.	1	0	0	1	0	16	13	0	3	0	(15)
Ohio	20	6	0	14	0	36	6	0	30	0	(16)	18	6	0	12	0	43	11	0	32	0	(25)	Ohio	28	13	0	14	1	51	7	1	43	0	(23)
Oklahoma	5	0	0	5	0	19	2	0	17	0	(14)	7	2	1	4	0	28	1	1	25	1	(21)	Oklahoma	4	4	0	0	0	21	3	0	18	0	(17)
Oregon	0	0	0	0	0	0	0	0	0	0	0	0	0	0	0	0	0	0	0	0	0	0	Oregon	0	0	0	0	0	0	0	0	0	0	0
Penn.	21	9	0	12	0	50	8	0	41	1	(29)	17	5	1	10	1	64	3	0	61	0	(47)	Penn.	30	15	0	13	2	67	6	0	61	0	(37)
Rhode I.	2	1	0	1	0	31	0	0	31	0	(29)	2	1	0	1	0	5	0	0	5	0	(3)	Rhode I.	3	2	0	1	0	15	0	0	15	0	(12)
S. Car.	2	1	0	1	0	4	3	0	1	0	(2)	2	1	1	0	0	7	4	0	3	0	(5)	S. Car.	1	0	0	1	0	11	2	0	9	0	(10)
S. Dak.	5	2	0	3	0	6	3	0	3	0	(1)	6	3	0	3	0	1	0	1	0	0	5	S. Dak.	8	4	0	4	0	2	2	0	0	0	6
Tenn.	11	3	1	7	0	39	1	0	38	0	(28)	9	2	0	7	0	17	4	0	13	0	(8)	Tenn.	5	1	0	4	0	30	1	0	29	0	(25)
Texas	47	15	2	30	0	77	10	7	60	0	(30)	56	23	2	29	2	82	27	9	46	0	(26)	Texas	93	38	0	55	0	69	13	8	48	0	24
Utah	45	13	2	30	0	203	56	7	137	3	(158)	49	16	1	30	2	214	47	1	161	5	(165)	Utah	65	31	1	30	3	243	47	5	186	5	(178)
Vermont	9	1	0	8	0	14	4	0	9	1	(5)	4	1	0	3	0	17	4	0	13	0	(13)	Vermont	11	3	0	8	0	17	4	0	13	0	(6)
Virginia	19	9	0	10	0	28	10	0	18	0	(9)	18	5	0	11	2	34	13	1	19	1	(16)	Virginia	18	6	0	11	1	32	12	0	20	0	(14)
Wash.	1,082	245	131	705	1	912	236	63	597	16	(70)	986	306	144	489	47	949	237	101	61	0	37	Wash.	1,407	559	94	713	41	950	263	99	588	0	457
West Vir.	3	3	0	0	0	2	1	0	1	0	1	3	1	0	2	0	3	2	0	1	0	0	West Vir.	0	0	0	0	0	3	2	0	1	0	(3)
Wisconsin	25	12	3	10	0	37	9	0	28	0	(12)	23	12	0	11	0	29	6	0	23	0	(6)	Wisconsin	26	11	0	14	1	34	5	0	29	0	(8)
Wy																																		

Net Migration of Recent High School Graduates by State

	New Undergrads. Only Fall, 1986			New Undergrads. Only Fall, 1992			New Undergrads. Only Fall, 1996			New Undergrads. Only Fall, 2000			New Undergrads. Only Fall, 2004			New Undergrads. Only Fall, 2008			"Into" Change '86-'08	
	Out of	Into	Net	Out of	Into	Net	Out of	Into	Net	Out of	Into	Net	Out of	Into	Net	Out of	Into	Net		
Pennsylvania	10,543	14,662	4,119	12,350	18,835	6,485	13,667	19,850	6,183	13,572	22,746	9,174	14,319	27,045	12,726	16,811	31,710	14,899	116%	
Indiana	2,947	6,113	3,166	3,920	9,836	5,916	4,474	9,876	5,402	4,447	10,310	5,863	4,744	10,342	5,598	5,294	13,676	8,382	124%	
Massachusetts	9,184	15,390	6,206	11,864	19,354	7,490	12,431	20,739	8,308	13,187	20,996	7,809	13,934	18,612	4,678	18,181	25,227	7,046	64%	
Arizona	1,230	3,721	2,491	1,847	3,935	2,088	1,847	5,134	2,855	2,259	5,014	2,755	2,798	6,778	3,980	3,522	10,329	6,807	178%	
North Carolina	2,005	9,529	7,524	2,428	11,044	8,616	2,428	10,463	7,419	3,432	10,469	7,037	4,423	12,254	7,831	6,092	12,751	6,659	34%	
Alabama	1,592	3,487	1,895	2,111	6,892	4,781	2,397	5,726	3,329	2,529	5,370	2,841	2,462	6,045	3,583	2,884	9,056	6,172	160%	
Dist. of Columbia	1,114	4,761	3,647	1,111	5,401	4,290	1,304	6,734	5,430	1,412	6,125	4,713	1,877	8,177	6,300	2,118	8,097	5,979	70%	
Rhode Island	1,616	4,256	2,640	2,020	6,442	4,422	2,408	6,245	3,837	2,325	7,547	5,222	2,218	5,421	3,203	2,752	8,468	5,716	99%	
South Carolina	2,088	3,114	1,026	2,549	3,534	985	2,701	5,133	2,432	2,520	4,996	2,476	2,532	6,064	3,532	2,640	8,320	5,680	167%	
Iowa	2,858	3,762	904	3,158	6,248	3,090	3,024	6,394	3,370	3,063	6,115	3,052	3,215	6,717	3,502	3,415	9,027	5,612	140%	
Utah	788	496	(292)	990	4,147	3,157	990	5,716	4,671	789	4,978	4,189	1,130	5,178	4,048	1,442	6,569	5,127	1224%	
Florida	7,143	7,312	169	8,853	8,726	(127)	8,734	9,956	1,222	7,902	9,532	1,630	8,517	19,473	10,956	11,474	15,824	4,350	116%	
West Virginia	1,142	2,529	1,387	1,619	3,637	2,018	1,698	3,411	1,713	1,470	3,506	2,036	1,209	3,910	2,701	1,208	5,177	3,969	105%	
Virginia	6,105	7,021	916	7,028	10,704	3,676	7,243	11,282	4,039	7,673	10,545	2,872	8,665	12,186	3,521	10,508	13,848	3,340	97%	
Kentucky	1,826	2,529	703	2,235	3,984	1,749	2,769	3,692	923	2,772	4,249	1,477	2,344	4,946	2,602	3,018	6,227	3,209	146%	
Oklahoma	1,509	1,130	(379)	2,176	2,157	(19)	2,374	2,368	(6)	2,200	2,970	770	2,228	4,250	2,022	2,577	5,349	2,772	373%	
Louisiana	1,858	3,553	1,695	2,776	4,396	1,620	3,177	4,391	1,214	2,498	4,158	1,660	2,494	5,661	3,167	2,642	5,096	2,454	43%	
Vermont	1,048	3,170	2,122	1,583	3,141	1,558	1,781	3,451	1,670	2,067	3,656	1,589	2,087	3,825	1,738	2,461	4,845	2,384	53%	
Mississippi	1,016	1,664	648	1,637	3,059	1,422	1,477	3,257	1,780	1,171	2,758	1,587	1,183	2,863	1,680	1,604	3,842	2,238	131%	
Arkansas	1,492	997	(495)	1,823	2,481	658	1,753	2,450	697	1,441	2,434	993	1,591	3,234	1,643	2,081	4,266	2,185	328%	
Kansas	1,282	3,182	1,900	1,945	3,512	1,567	2,125	3,522	1,397	2,483	2,890	407	2,692	4,453	1,761	3,214	5,397	2,183	70%	
Missouri	3,633	4,539	906	4,590	5,991	1,401	5,121	6,703	1,582	5,006	6,983	1,977	5,971	7,578	1,607	6,933	9,056	2,123	100%	
Tennessee	2,933	4,841	1,908	4,071	5,694	1,623	4,367	6,916	2,549	5,075	7,292	2,217	5,277	6,530	1,253	5,898	7,915	2,017	63%	
North Dakota	407	1,561	1,154	1,048	2,538	1,490	1,182	2,527	1,345	1,152	2,289	1,137	1,465	3,252	1,787	1,340	3,313	1,973	112%	
New York	18,664	16,480	(2,184)	21,809	17,872	(3,937)	24,268	21,125	(3,143)	23,668	22,519	(1,149)	23,607	21,492	(2,115)	29,622	31,589	1,967	92%	
Oregon	1,660	2,306	646	2,791	3,341	550	3,371	3,867	496	3,646	3,643	(3)	3,794	4,144	350	4,251	6,161	1,910	167%	
Wyoming	625	501	(124)	892	631	(261)	925	945	20	1,060	419	419	1,066	2,167	1,101	783	2,009	1,226	301%	
Delaware	1,142	2,666	1,524	1,289	2,664	1,375	1,363	2,977	1,614	1,431	2,695	1,264	1,547	3,032	1,485	1,973	3,119	1,146	17%	
Wisconsin	3,454	5,783	2,329	5,212	4,308	(904)	6,019	5,021	(998)	6,209	7,284	1,075	7,347	7,644	297	8,035	9,101	1,066	57%	
Idaho	807	2,350	1,543	1,443	3,084	1,641	1,899	2,137	238	1,784	817	(967)	1,998	2,604	606	2,558	3,162	604	35%	
South Dakota	953	1,161	208	1,213	1,517	304	1,514	1,339	(175)	1,598	1,622	24	1,819	1,948	129	1,564	2,134	570	84%	
Montana	1,004	155	(849)	1,481	1,248	(233)	1,722	1,389	(333)	1,482	1,276	(206)	1,699	1,735	36	1,483	1,851	368	1094%	
Nebraska	1,581	1,665	84	2,177	2,216	39	2,149	2,473	324	2,186	2,494	308	2,672	2,588	(84)	2,648	2,981	333	79%	
New Mexico	1,038	943	(95)	1,621	1,314	(307)	2,347	1,560	(787)	2,446	1,193	(1,253)	1,854	1,666	(188)	1,927	2,226	299	136%	
New Hampshire	2,174	2,677	503	3,003	4,791	1,788	3,394	4,927	1,533	4,030	4,782	752	3,956	4,166	210	5,296	5,533	237	107%	
Maine	1,862	1,282	(580)	2,928	2,069	(859)	3,286	2,255	(1,031)	3,232	2,323	(909)	2,991	1,900	(1,091)	3,115	3,154	39	146%	
Colorado	3,529	1,603	(1,926)	4,110	6,049	1,939	4,483	5,996	1,513	4,668	5,921	1,253	5,677	5,688	11	7,263	7,246	(17)	352%	
Ohio	7,079	6,265	(814)	9,336	8,991	(345)	9,282	10,432	1,150	10,467	10,265	(202)	11,336	10,076	(1,260)	13,565	12,953	(612)	107%	
Washington	2,559	2,018	(541)	3,855	3,359	(496)	4,732	4,241	(491)	5,487	3,963	(1,524)	5,869	4,493	(1,376)	7,152	5,917	(1,235)	193%	
Nevada	812	194	(618)	1,220	593	(627)	1,579	1,054	(525)	1,395	921	(474)	1,612	1,241	(371)	2,457	1,185	(1,272)	511%	
Alaska	1,046	40	(1,006)	1,088	264	(824)	1,444	191	(1,253)	1,425	199	(1,226)	1,355	260	(1,095)	1,554	234	(1,320)	485%	
Michigan	4,589	2,346	(2,243)	5,619	4,922	(697)	5,803	6,045	242	6,425	4,047	(2,378)	6,406	6,491	85	8,230	6,867	(1,363)	193%	
Hawaii	1,227	531	(696)	1,559	764	(795)	2,069	1,111	(958)	2,326	796	(1,530)	2,215	1,415	(800)	2,873	1,314	(1,559)	147%	
California	6,431	10,555	4,124	12,529	12,229	(300)	14,962	13,034	(1,928)	14,070	10,753	(3,317)	17,395	14,103	(3,292)	22,750	20,103	(2,647)	90%	
Georgia	4,737	4,971	234	6,758	6,672	(86)	6,203	7,203	1,000	7,005	6,178	(827)	8,207	8,994	787	10,553	7,764	(2,789)	56%	
Minnesota	5,556	3,991	(1,565)	6,966	5,834	(1,132)	7,853	6,548	(1,305)	8,995	6,638	(2,357)	10,689	7,950	(2,739)	12,553	8,736	(3,817)	119%	
Connecticut	9,270	5,079	(4,191)	10,226	5,601	(4,625)	10,358	6,764	(3,594)	10,843	7,756	(3,087)	10,648	8,160	(2,488)	14,214	9,208	(5,006)	81%	
Maryland	7,790	3,330	(4,460)	8,937	5,816	(3,121)	9,935	6,959	(2,976)	10,825	6,371	(4,454)	13,266	5,423	(7,843)	16,254	7,774	(8,480)	133%	
Texas	4,311	5,031	720	7,597	6,990	(607)	9,561	7,666	(1,895)	11,284	5,916	(5,368)	14,299	8,110	(6,189)	18,617	8,483	(10,134)	69%	
Illinois	13,133	4,444	(8,689)	14,552	7,181	(7,371)	15,948	7,410	(8,538)	16,987	7,847	(9,140)	19,064	8,393	(10,671)	24,796	13,826	(10,970)	211%	
New Jersey	20,582	1,693	(18,889)	21,372	2,868	(18,504)	22,218	3,502	(18,716)	22,634	3,818	(18,816)	25,853	3,263	(22,590)	32,205	4,386	(27,819)	159%	
Territories	Unknown			1,251	82	(1,169)	999	27	(972)	1,295	159	(1,136)	1,523	467	(1,056)	1,042	3,536	2,494	Avg. change: 109%	
Foreign Countries	Unknown			18,510			33,257			18,458			20,549			28,041				
Source Unknown	46,505		Discrep- ancy: -16%	Unknown			Unknown			Unknown			16,758	2,039	Discrep- ancy: 0%	18,454				Discrep- ancy: 0%
Tot. Interstate Activ	241,479	203,379	-16%	267,076	278,958	4%	305,518	304,134	-0%	299,806	300,543	0%	346,446	346,446	0%	425,937	425,937	0%		

SORT
↑
COLUMN